

# COMMON NOUNS AND PROPER NOUNS

Common nouns are general and  
proper nouns are specific.

Please capitalize proper nouns.

Common Noun:

My favorite drink is **soda**.

Proper Noun:

My favorite drink is ***Diet Coke***.



# Common and Proper Nouns

A noun is a person, place or thing. Advanced learners can be taught a noun is also an idea or quality.

**Common nouns**- are not specific people, places or things.

"Near a river is a city named after a man."

**Proper nouns**- specific people, places or things.

"Near the Nile River is city called Alexandria, which is named after Alexander the Great."

Common Nouns	Proper Nouns
student	your name
artist	Salvador Dali
planet	Earth
country	United States
state	New York
park	Central Park
building	Empire State Building
restaurant	McDonald's
chocolate	Snickers
day	Monday
ocean	Atlantic
mountain	Mt. Everest

# Common Noun

**river**



# Proper Noun

**Nile River**





# Common Noun

**city**



5

# Proper Noun

**Alexandria**



# Common Noun

**man**



6

# Proper Noun

**Alexander the Great**

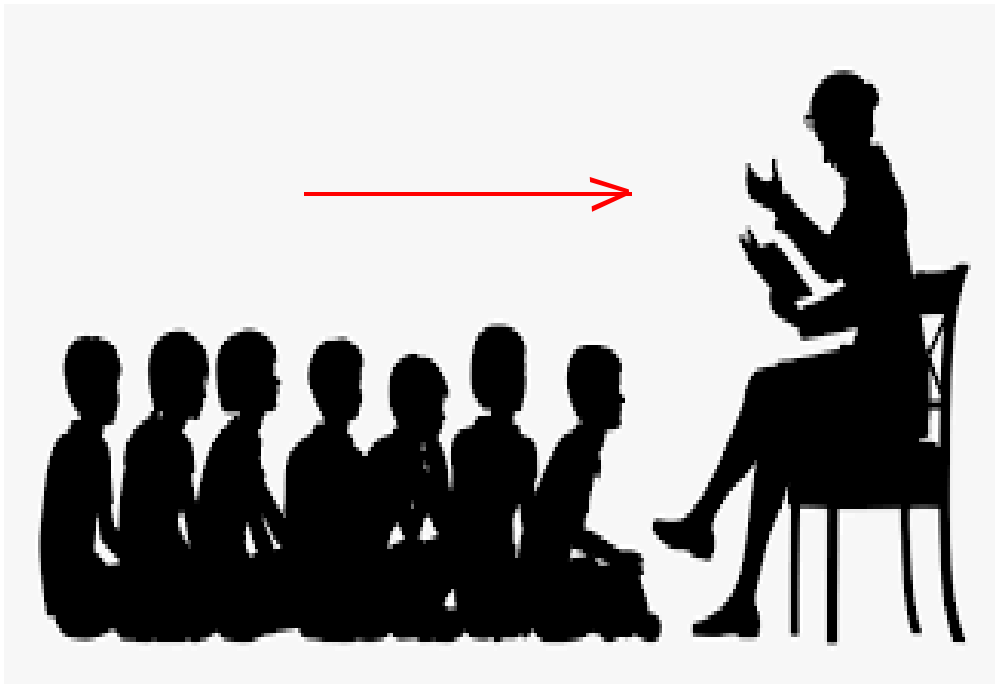


Duh, it's really that simple.  
Capitalize all proper nouns  
regardless of where they  
are in a sentence.



# Common Noun

**teacher**



# Proper Noun

**Mr. Robert**





# Common Noun

**artist**



9

# Proper Noun

**Salvador Dali**



# Common Noun

**planet**



# Proper Noun

**Earth**



# Common Noun

country



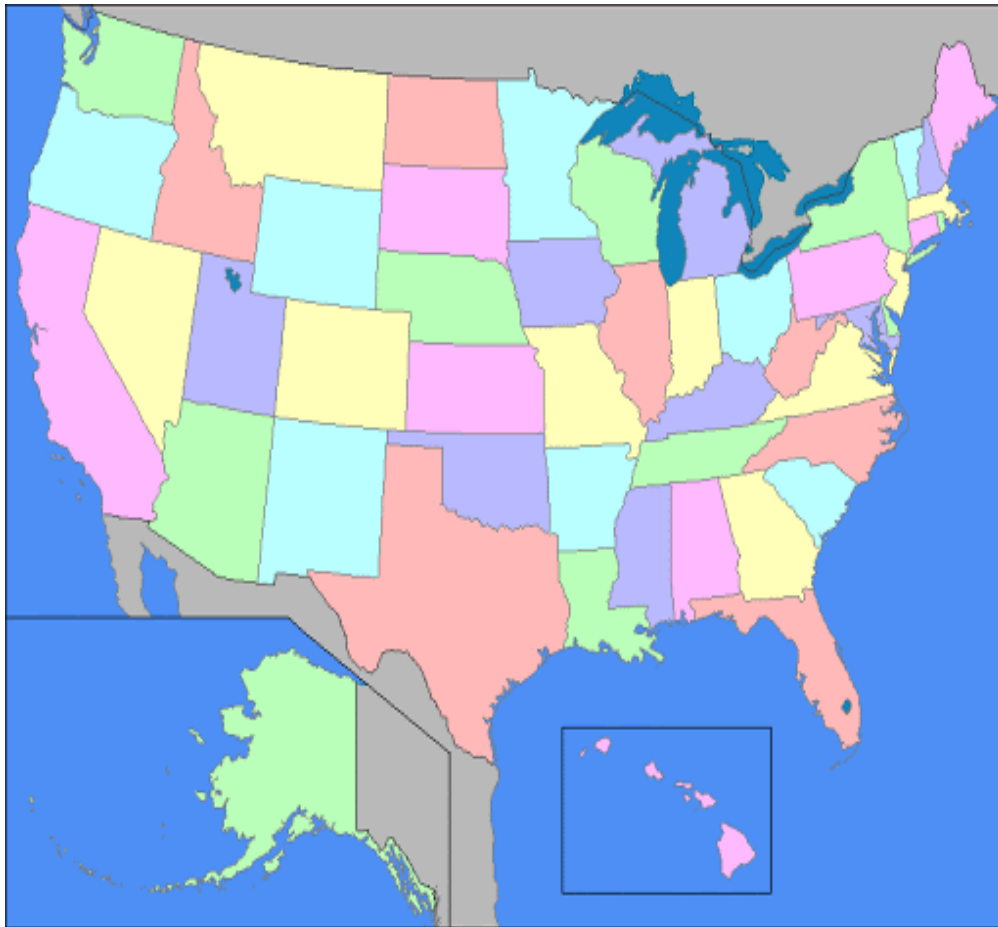
# Proper Noun

The United States



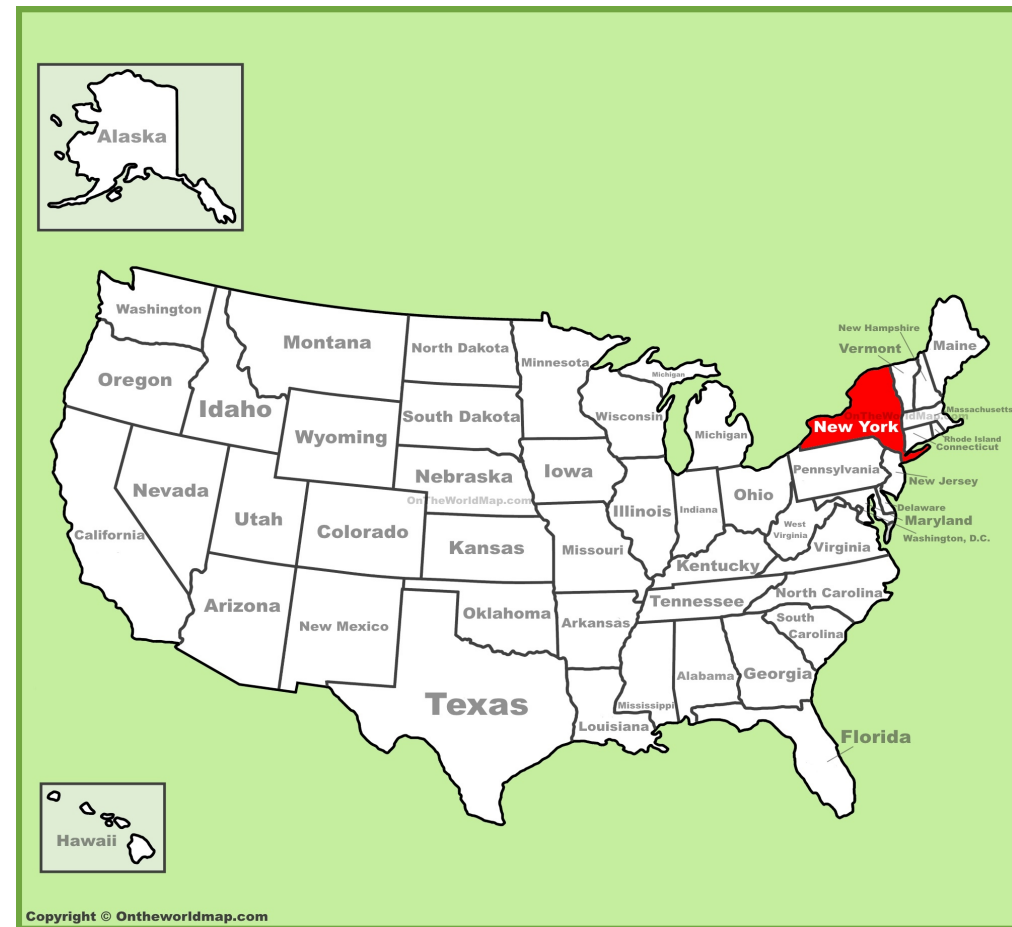
# Common Noun

**state**



# Proper Noun

**New York**





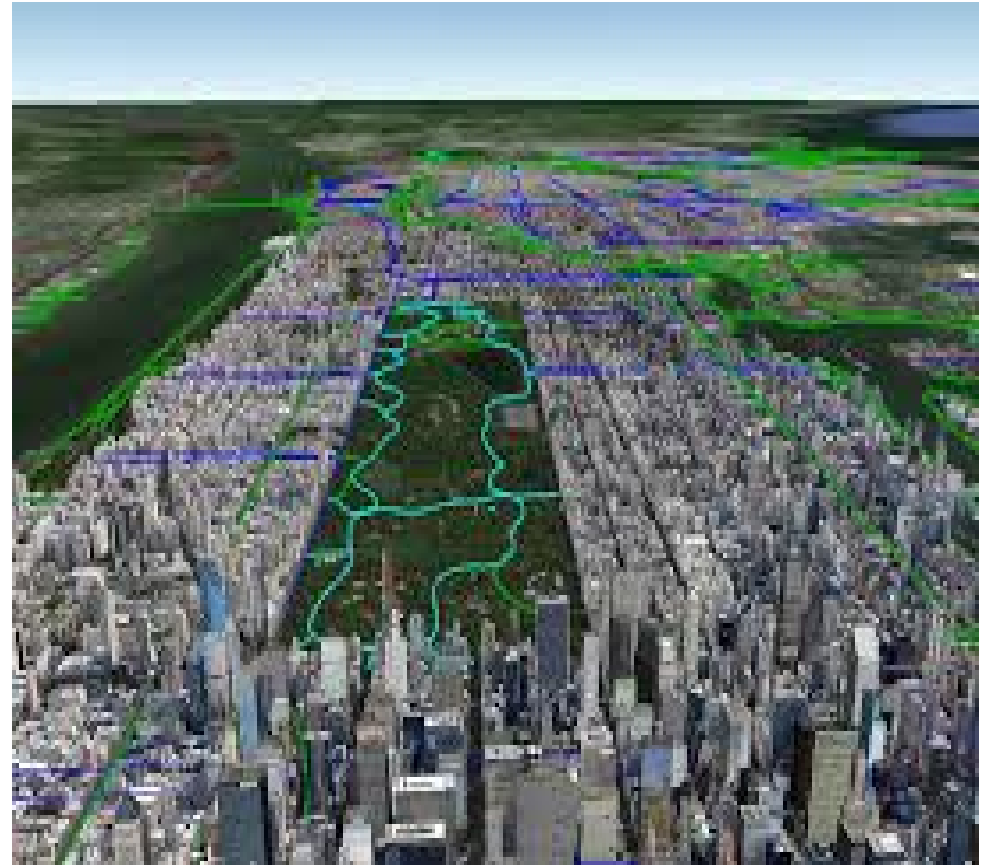
# Common Noun

**park**



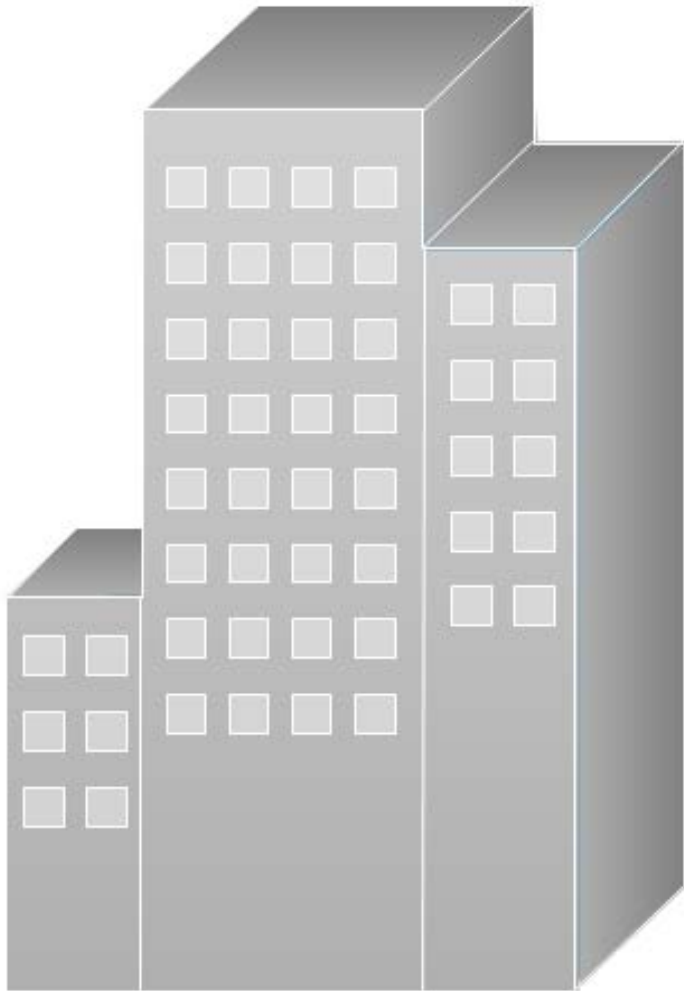
# Proper Noun

**Central Park**



# Common Noun

**building**



# Proper Noun

**Empire State  
Building**



# Common Noun

**restaurant**



# Proper Noun

**McDonald's**



# Common Noun

**chocolate**



# Proper Noun

**Snickers**



# Common Noun

**day**

		1	2	3	4	5
6	7	8	9	10	11	12
13	14	15	16	17	18	19
20	21	22	23	24	25	26
27	28	29	30	31		

# Proper Noun

**Monday**





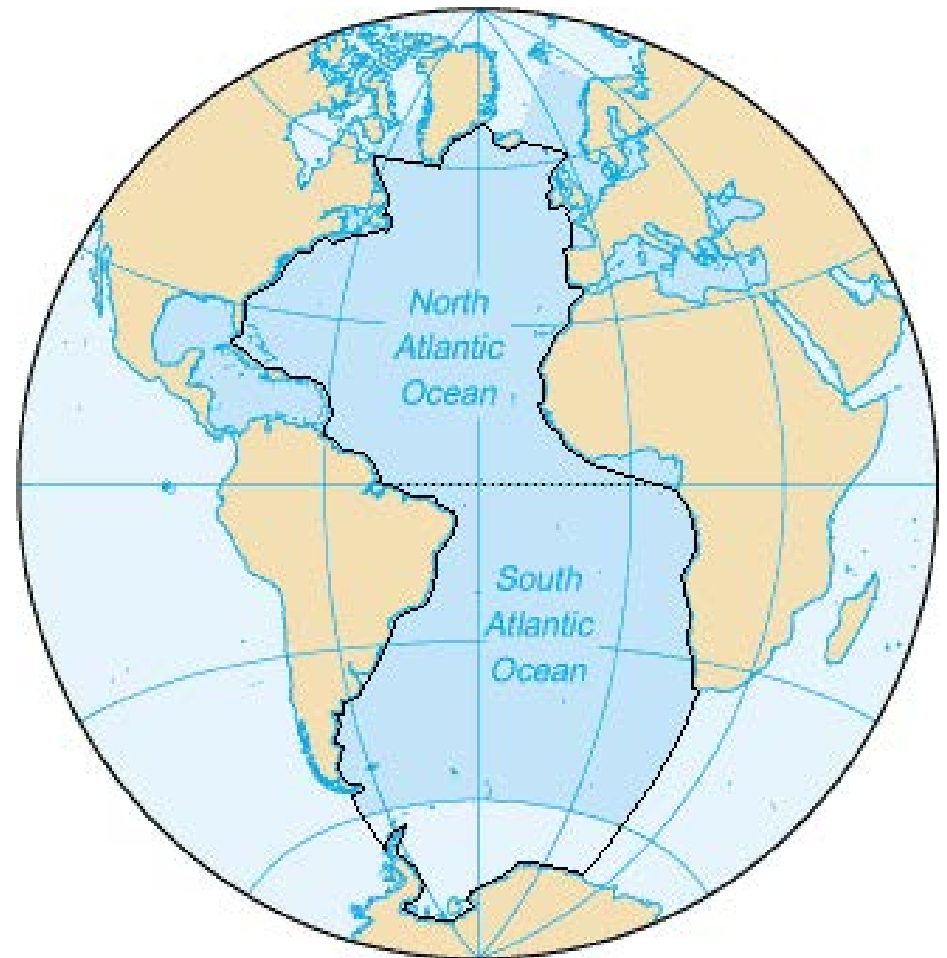
# Common Noun

**ocean**



# Proper Noun

**Atlantic**



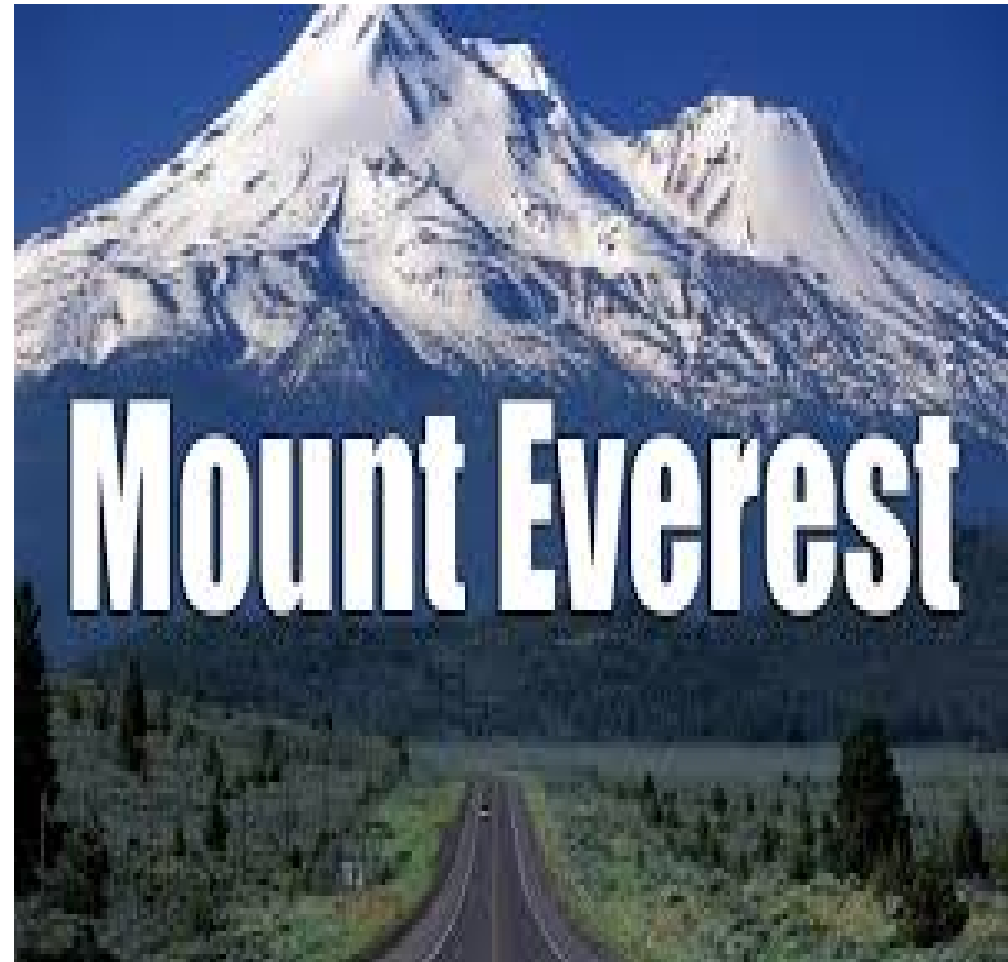
# Common Noun

**mountain**



# Proper Noun

**Mt. Everest**



We know that a noun can be a person, a place or a thing.

A shoe is a thing (common noun).

**"Would you wear or eat this *shoe*?"**



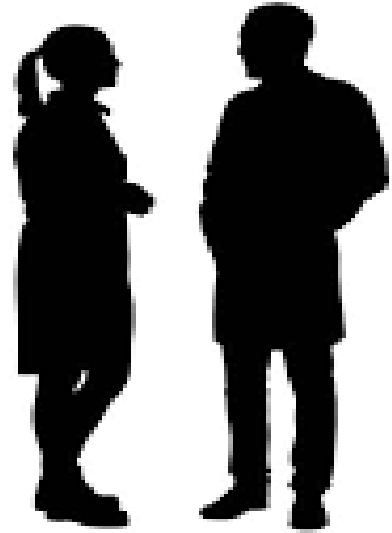
Name brands are specific (proper nouns).

**"I would not eat a *Nike*!"**





**What about the names mom or dad?  
Are they capitalized?**



**If you are being specific, yes.\***



*Yes Dad, you are  
a proper noun.*

**Can you substitute a person's name in  
the place of mom or dad and have the  
sentence still make sense?**

**"Yes Homer, you are a proper noun."**

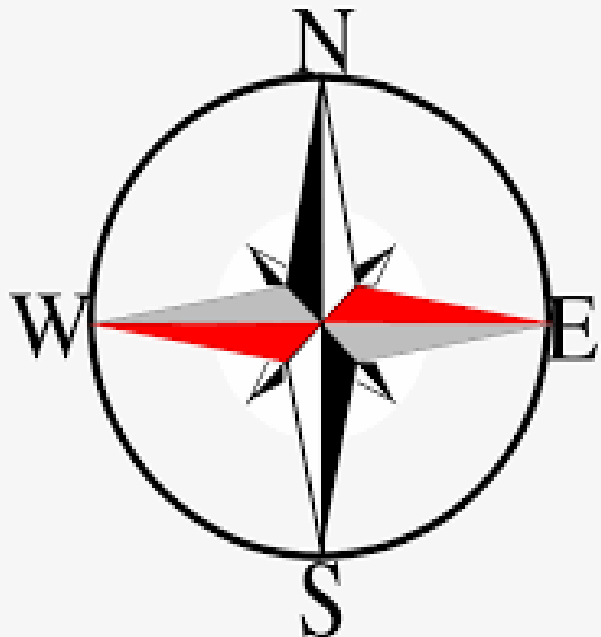
**\* Don't capitalize mom or dad if preceded by an  
article (a & the) or a pronoun (my, your, etc).**

**Seasons (winter, summer, spring and fall) are only capitalized when part of *proper noun*.**



**"This winter, I am going to live in my *Summer Palace*."**

**The same goes for directions (north, south, east and west.)**



# Common Noun

**car**



# Proper Noun

**Lamborghini**



# Common Noun

**chips**



# Proper Noun

**Pringles**



# Common Noun

**cookie**



# Proper Noun

**Oreo**



# Common Noun

**cereal**



# Proper Noun

**Lucky Charms**





# Common Noun

**tea**



# Proper Noun

**Lipton**



# Common Noun

**soda, beverage**



# Proper Noun

**Dr. Pepper**





# Common Noun

**athlete**



# Proper Noun

**Willie Galimore**



# Common Noun

**team**



# Proper Noun

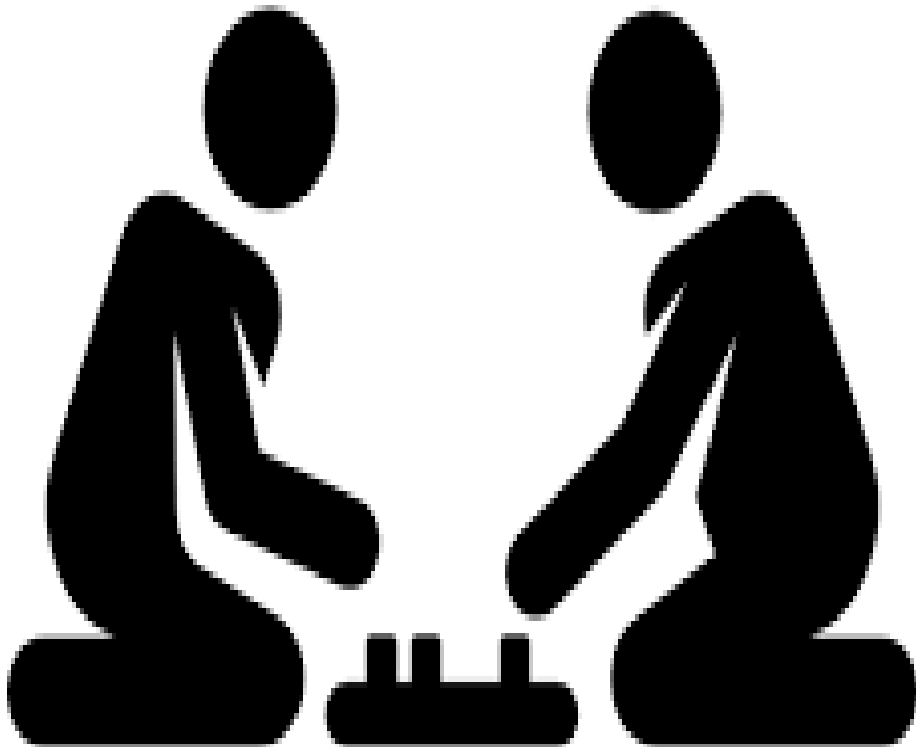
**Chicago Bears**



1963

# Common Noun

**toy, game**



# Proper Noun

**Connect 4**



# Common Noun

language



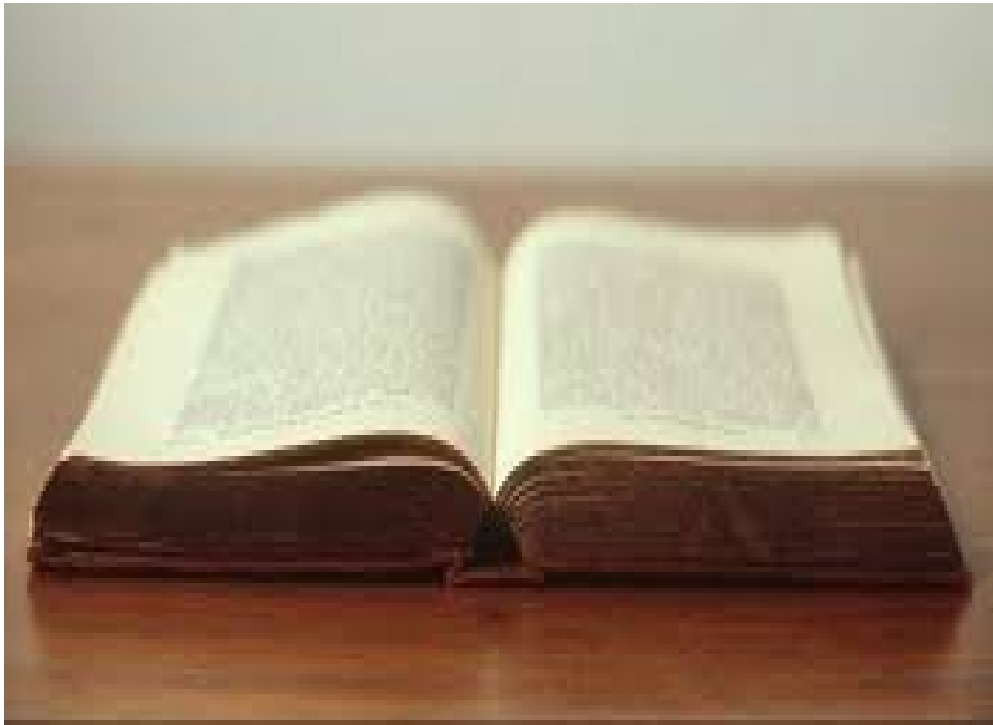
# Proper Noun

English



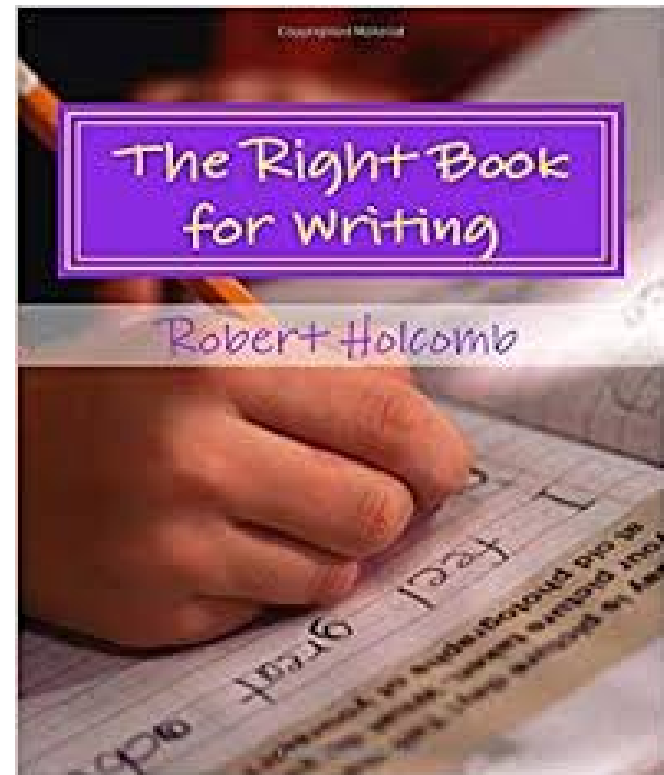
# Common Noun

**book**



# Proper Noun

***The Right Book  
for Writing***



# Common Noun

**author**



# Proper Noun

**Robert Holcomb**





# Common Noun

**school**



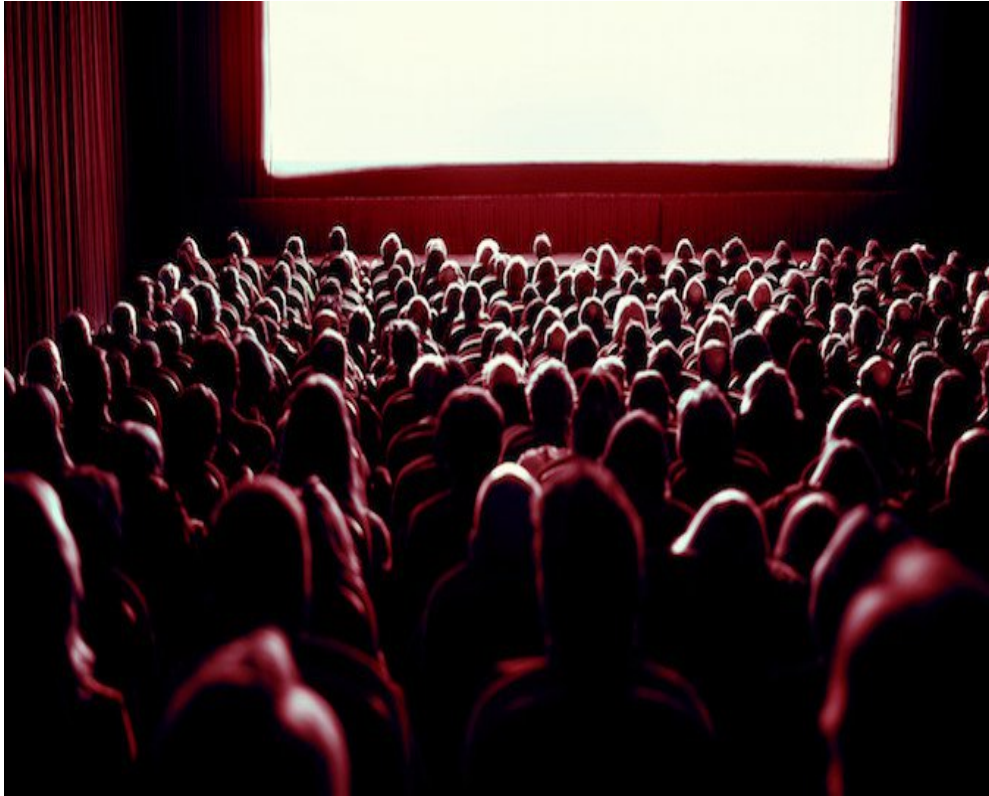
# Proper Noun

**SIU-  
Edwardsville**



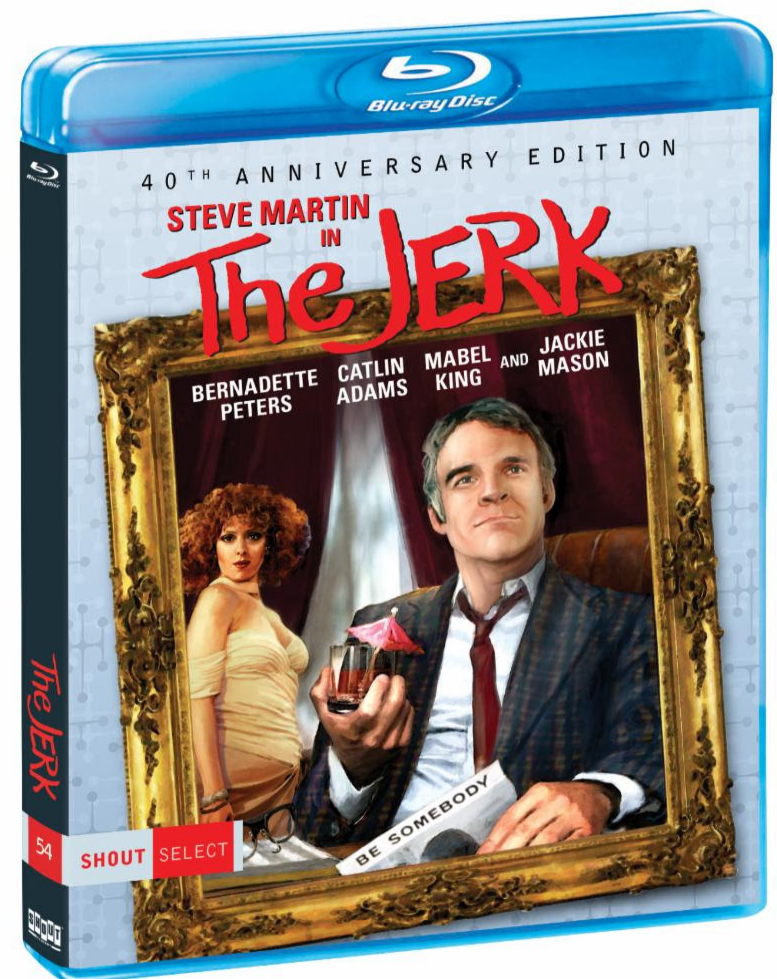
# Common Noun

**movie**



# Proper Noun

**The Jerk**





# Common Noun

**month**



# Proper Noun

**June**

MAY 1970  
S M T W T F S  
1 2  
3 4 5 6 7 8 9  
10 11 12 13 14 15 16  
17 18 19 20 21 22 23  
24 25 26 27 28 29 30  
31

**JUNE 1970**

JULY 1970  
S M T W T F S  
1 2 3 4  
5 6 7 8 9 10 11  
12 13 14 15 16 17 18  
19 20 21 22 23 24 25  
26 27 28 29 30 31

SUNDAY	MONDAY	TUESDAY	WEDNESDAY	THURSDAY	FRIDAY	SATURDAY
	1	2	3	4	5	6
7	8	9	10	11	12	13
14	15	16	17	18	19	20
21	22	23	24	25	26	27
28	29	30				

# Common Noun

## holiday



# Proper Noun

## New Year's Day

### Federal Holidays 2012

Date	Federal holiday	Day of the week
January 1, 2012	New Year's Day	Sunday
January 2, 2012	New Year's Day (observed)	Monday
January 16, 2012	Martin Luther King Day	Monday
February 20, 2012	Presidents' Day	Monday
May 28, 2012	Memorial Day	Monday
July 4, 2012	Independence Day	Wednesday
September 3, 2012	Labor Day	Monday
October 8, 2012	Columbus Day	Monday
November 11, 2012	Veterans Day	Sunday
November 12, 2012	Veterans Day (observed)	Monday
November 22, 2012	Thanksgiving Day	Thursday
December 25, 2012	Christmas Day	Tuesday

# Common Noun

**airline**



# Proper Noun

**Southwest**



# Common Noun

**band**



# Proper Noun

**The Who**



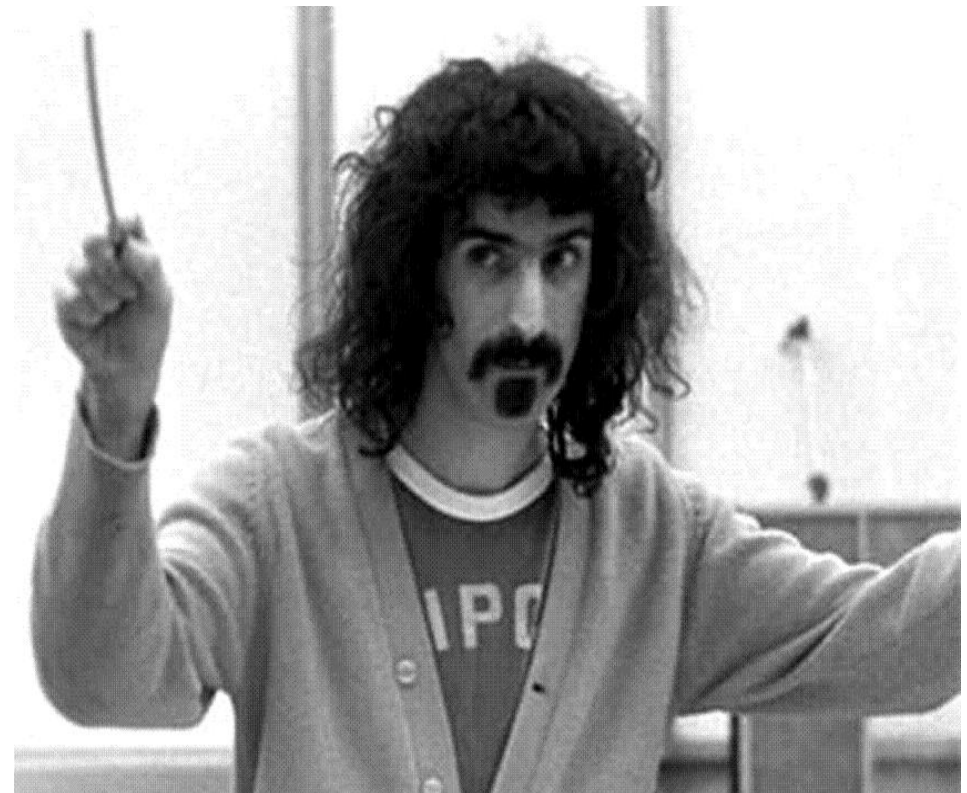
# Common Noun

**composer**



# Proper Noun

**Frank Zappa**



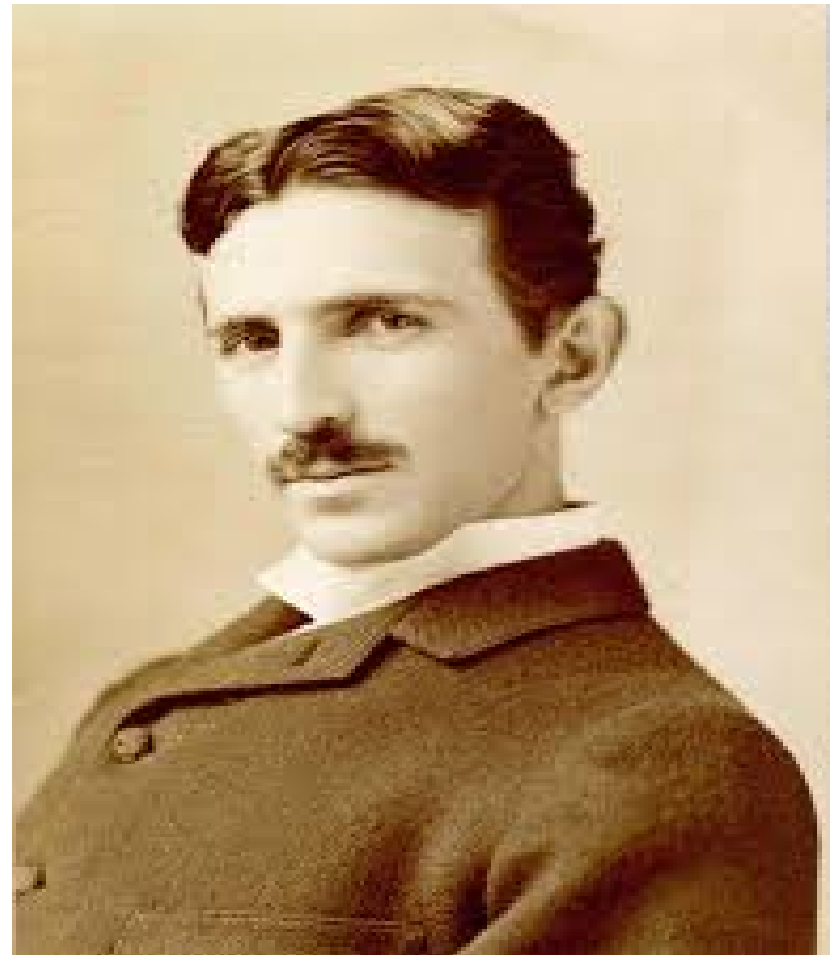
# Common Noun

**inventor**



# Proper Noun

**Nikolai Tesla**





# Common Noun

**television**



# Proper Noun

**Samsung**



# Common Noun

**tape**



# Proper Noun

**Scotch**



# Common Noun

**lake**



# Proper Noun

**Lake Superior**



# Common Noun

**museum**



# Proper Noun

**The Louvre**



# Common Noun

**president**



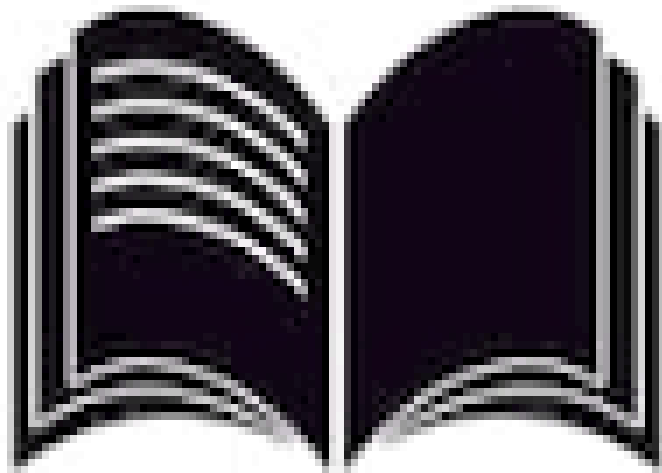
# Proper Noun

**Teddy Roosevelt**



# Common Noun

**magazine**



# Proper Noun

**Time**





# Common Noun

**bell**



# Proper Noun

**Liberty Bell**



# Common Noun

**monument**

**A structure (statue, building or place) to honor a person or an event.**

# Proper Noun

**The  
Washington  
Monument**



# Common Noun

**ship, boat**



# Proper Noun

**The Pacific Princess**



# Common Noun

**store**



# Proper Noun

**Walmart**



**Plants and animals are generally lower case.**

**Animal = hippopotamus**



Wow! I'm lowercase.

**When an animal name has a proper noun before it, capitalize only the proper noun.**

**dog = German shepherd**

**Notice the generic word, shepherd (common noun), is lower case.**

**In conclusion, a proper noun is specific; therefore, please capitalize it.**



**"Every educated person under the Moon should take my advice."**

**Notice *the* makes the Moon specific.**

**Maybe next time I shall be general and speak of a moon.**

